

Viola

Blood from Stone

for chamber orchestra

1. Kyrie

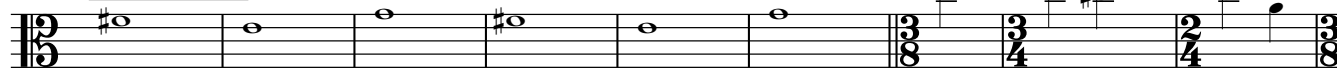
♩ = 96

Charlie Barber

Tubular Bells

A

Ob. 1



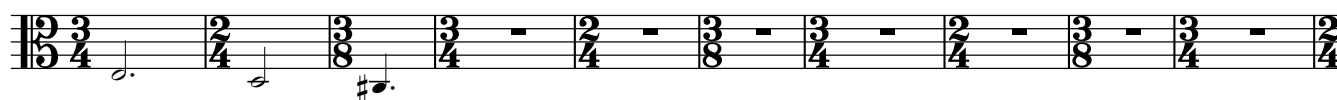
10

B

Bsn 2



20



30

C

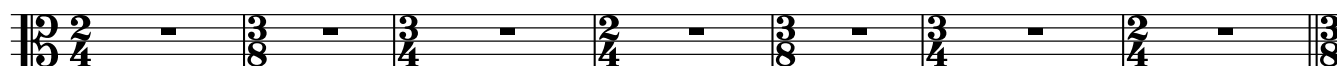
Tpt 1



40



48



55

D

div.

*pp*

64

unis.

*f*

74



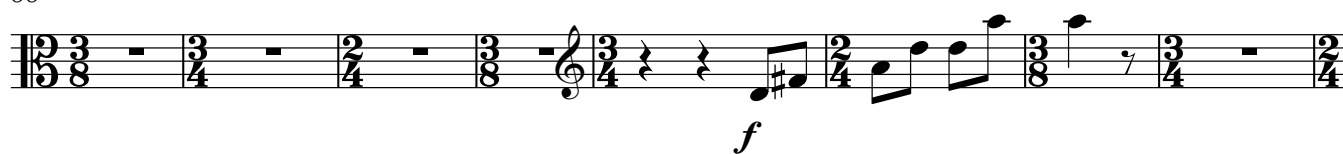
81

E

*mf**p*

Viola

88



96



103

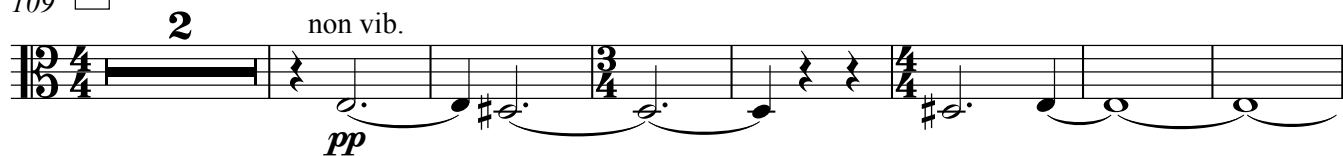


2. Perspective

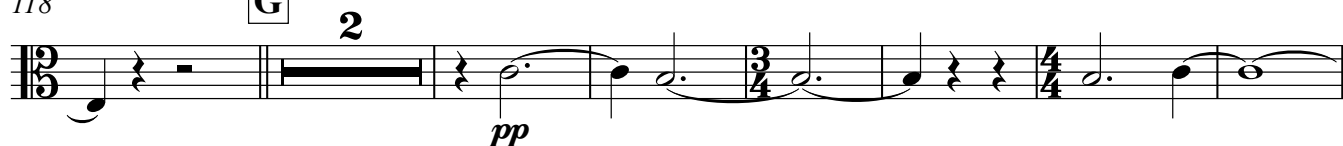
Tranquillo

♩ = 60

109 **F**



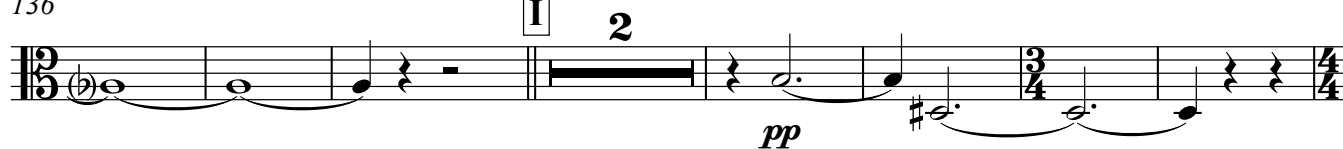
118 **G**



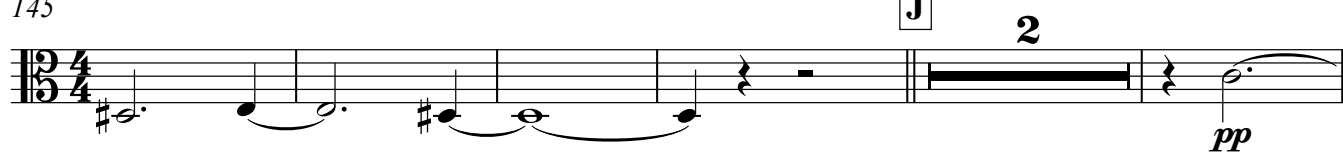
127 **H**



136 **I**



145 **J**



152



159 **K**

2

pp

165

2/4

3

$\text{♩} = 120$

172 L

f *energico*

This system contains measures 172 through 176. It begins with a 3/8 time signature, followed by a 4/4 time signature, then a 3/4 time signature, then a 2/4 time signature, and finally a 3/4 time signature. The music is written on a single staff with a treble clef. The key signature has one sharp (F#). The tempo/mood is marked *energico*. The first measure of the system (measure 172) is marked with a forte *f* dynamic. The music consists of eighth and sixteenth notes, with some measures containing beamed sixteenth notes. There are also some rests and a final measure with a half note.

177

cresc. *f*

[illegible]

188

cresc.

f

N

192

cresc.

[illegible]

Charlie Barber - Blood from Stone

4

Viola

203 P

mf *cresc.* *f*

207

212 Q

mf *mf*

218 R

cresc. *f*

223

228 S

p

233 T

f

238

243 U

cresc. *mf*

247

cresc.

Viola

253 V

f

258 W

ff *cresc.*

262

f

266 X

cresc.

270

mp *mf* *cresc.* *f*

277 Y

mf

282 Z

cresc. *f*

286

291

cresc. *ff*